

INSTANTLY...



BOILING



CHILLED



SPARKLING



STILL



FILTERED

Billi™

... AT YOUR FINGERTIPS



At Billi, we design and manufacture a range of energy efficient filtered water systems that offer our customers the very best in innovation, superior performance and reliability.

For more than 25 years, we have maintained a commitment to excellence and quality that is second to none. Our filtered water systems are preferred by designers and architects around the world for their elegant styling and space saving design.

Billi launched the world's first under-counter boiling and chilled filtered water system in the early 1990s and was instantly recognised as the premium product of choice because of its high functionality, energy efficiency and space-saving design. From that first product, our range has grown to include a full complement of commercial systems now available throughout the world.

Today, we continue to innovate. Our designs keep pace with modern building techniques, contemporary interior concepts and changing lifestyle choices. And importantly, our products continue to incorporate improved eco-technology features.

Billi offers premium after sales care and product support, ensuring that our valued relationship with our customers does not end at purchase.

Billi is designed and manufactured in Australia.



CONTENTS

Billi Features and Benefits	04
Environmental Focus	06
Heat Exchange Technology	07
Premium Filtration	08
Service Plans	10
Choosing your Billi Under-Counter System	12
Choosing your Billi Dispenser Design and Finish	16
Accessories and Finishes	20
Installation Information	21
Product Selection Guide	22
Case Studies	24
Warranty and Certifications	26



MODERN DESIGN

Stylish dispenser designs

Collaboration with architects, designers and consumers resulted in a range of sophisticated, stylish tapware that perfectly complements the style of its surroundings.

Range of finish options

Billi has a variety of finishes in its dispenser range including the popular chrome, brushed chrome, matte black and matte white with many more finishes available.

Range of site specific tapware

There is a range of tapware suited to specific applications, including a safety dispenser and XL levered dispenser with red & blue coloured levers and braille pads for vision impaired applications.



SAFETY AND USER FUNCTIONALITY

Splash free technology

Billi's Splash Free boiling water delivery varies the water flow, slowing momentarily to eliminate splashing as the water first enters the cup.

Safety first

The red lock icon demonstrates when the safety switch is activated. Simply touch the sensor switch to release the lock and activate the boiling water. It will revert to safety mode after a period of non use.

Disability conscious design

The standard XL dispenser complies with disabled access standards. XR dispenser is ideal for wheel chair disabilities with remote control dispenser activation.

Tap swivel feature

A unique swivel action allows you to swing the dispenser out of the way if you need more sink space.



UNDER-COUNTER TECHNOLOGY

No cupboard ventilation required

Systems with heat exchange technology do not require cupboard ventilation or a cooling fan and operate a lot quieter than air-cooled systems. Cupboard ventilation is recommended for air-cooled systems.

Space saving design

With a focus on space saving, Billi systems have one of the smallest footprints on the market, allowing you to make the most of the valuable under cupboard space.



PREMIUM FILTRATION

Billi's range of premium filters are equipped with unique Fibredyne™ technology.

The Fibredyne™ technology is a three layered structure which provides superior water quality.



ENERGY SAVING

Recovery, recycling and saving

Billi recovers the waste heat energy produced in the chilling process to preheat the boiling water, enabling our systems to achieve substantial energy savings.

Time-switch modes

An inbuilt 7 day time switch ensures the system is running only when it is needed, eliminating unnecessary out-of-hours power consumption. An energy saving stand-by mode can be selected to activate after a preset time of non use. The Billi will power down to conserve power.

Cooling technology

Billi is the only manufacturer to offer both water-cooled and air-cooled options. Our water-cooled systems are the most energy efficient option and Billi's heat-exchange technology ensures water usage is absolutely minimal.

Billi's air-cooled option generates far less heat than traditional air-cooled systems.

Billi's Environmental Focus



*On Eco, Quadra & Quadra Plus models only.



Heat Exchange Technology

There is no need to compromise your lifestyle to reduce your carbon footprint. Billi is renowned for its eco focus, ensuring our sustainable appliances go beyond water and energy saving. We aim for low environmental impact to enhance the enjoyment of your personal surroundings. A total quality commitment makes a Billi system Australia's first choice in water appliances – stylish designs combined with impressive performance. Chilling water creates waste heat energy. Billi's patented technology recovers and reuses energy to preheat the boiling water, thereby saving energy. Effective water and energy saving initiatives help meet Green Building Design (GBD) objectives. Billi filtered water systems offer unique power consumption advantages:

- Thermodynamic heat-exchange technology recovers and reuses heat energy;
- High performance polyethylene insulation retains water temperature and saves energy.
- Stand-by mode conserves power during set non-use periods.

Billi lets you enjoy pure, clean water without costly environmental impact through achieving optimal water and energy savings.

GreenTag Certification

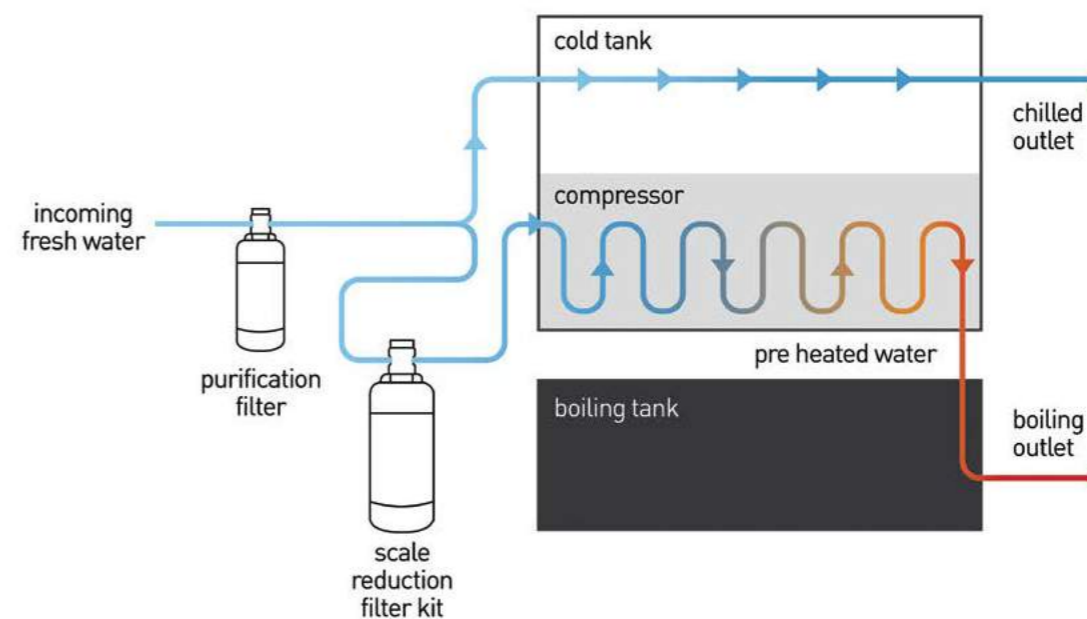
Global GreenTag is one of the world's most robust, trusted and widely recognised ecolabels which independently assures that every product is fitness tested and certified under leading certification programs that use world's best scientific methods. They have earned the reputation and trust of thousands of buyers, hundreds of companies and numerous green building councils, certification bodies and governments around the world. Billi complies with GreenTag International standard v.32 with Gold level certification on the Eco, Quadra and Quadra Plus models.

The assessments required to achieve the Gold level certification includes:

- ✓ Building/Product Synergy
 - Makes building & other systems more efficient
 - Multiple purpose product
- ✓ Corporate Social Responsibility
 - Fit for purpose certified
- ✓ Health & Ecotoxicity
 - Considered safe to use
- ✓ LCA
 - Life Cycle Analysis – Greenhouse Gas
 - 'Low carbon'
 - Carbon footprint available
- ✓ Life Cycle Analysis – Water
 - Highly water efficient

The Heat Exchange Technology

Billi's unique heat-exchange system uses change-of-state technology which harvests the heat energy generated during the chilling cycle to preheat the water going into the boiling tank. This enables Billi systems to achieve substantial energy savings.



WRAS Approved Product

Billi water and air-cooled under-counter systems (Eco, Quadra & Quadra Plus, Sahara, Alpine models) with XL, XT and XR dispensers are WRAS approved. Further information: www.wras.co.uk/search/products/billi



Premium Filtration

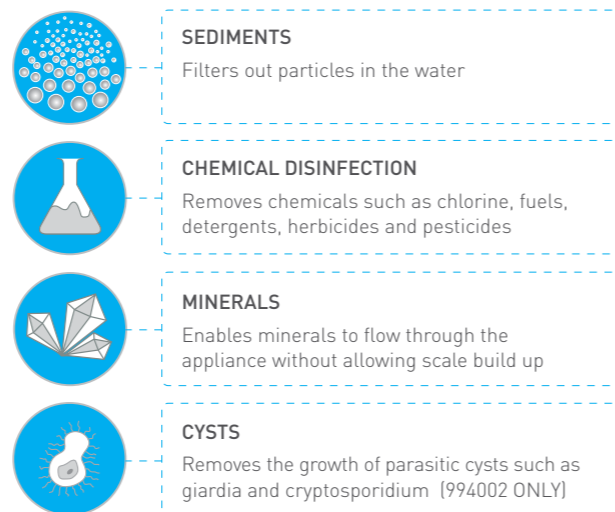
Billi prides itself on offering world class water filtration products to the global market. Billi's filter range is tested to the strictest health standards and is certified by the globally recognised NSF public health & safety organisation which ensures the highest level of drinking water is available.

FibreDyne™ filters

Billi's range of premium filters have been integrated with Pentair's unique Fibredyne™ technology. The Fibredyne™ technology has a three layered structure with each unique layer aiding in the water filtration process. The filter range provides superior water quality, consistent filter life and peace of mind.

Key Fibredyne™ technology benefits

- Turbidity reduction and life
- Chemical taste and odour reduction
- Three layers remove cysts with a very low pressure (Unique to Pentair) drop (2-5 psi), submicron filter only



- Higher flow rate
- Scale reduction
- Advanced multi stage filtration

Standard filters vs Billi premium filters

Standard

CONVENTIONAL CARBON FILTER

Conventional filters are made up of granules and often held together with a resin, decreasing the surface area and therefore the quality of the filtration.

Billi

FIBREDYNE™ CARBON FILTER

Fibredyne™ technology is fibrous and matted together, increasing the surface area of the carbon meaning there is greater contact time and better quality filtration.

Replacement filters

Periodic replacement of filter cartridges is necessary to maintain water quality. Genuine replacement Billi filter and limescale cartridges are available online at www.billi-uk.com/online

Easy change replacement filter

Replacing your filter cartridge is simple. Flashing amber dispenser icons indicate when replacement is due.

The swing change filter simply swings forward and slides off.

Fitting the new filter is just as easy, simply slide the filter in and swing it back. The cartridge locks into place.

Follow our 'how to...' videos for further guidance: www.billi-uk.com/howto



<p>Billi Replacement filter - 5 Micron (994001)</p>	<p>Billi Replacement filter - Sub Micron (994002)</p>	<p>Everpure Claris Ultra 500 - M Replacement filter (Limescale) Medium</p>
<p>Everpure Claris Ultra 1000 - L Replacement filter (Limescale) Heavy</p>	<p>Everpure Claris Ultra 1500 Replacement filter (Limescale) Very Heavy</p>	<p>Everpure Claris Ultra 2000 - XXL Replacement filter (Limescale) Extremely Heavy</p>








Billi offers our customers the very best innovation, superior performance and reliability and support this with a world class customer service experience.

Boiling, chilled and sparkling water systems do require maintenance.

Our commitment is to make it easy for you.



Service Plan Benefits

-  Reduce costs and downtime
-  Guaranteed priority service
-  Preventative maintenance ensures trouble-free operation for peace of mind
-  Only accredited service technicians will service your systems
-  Work with a single service company nationally to simplify call bookings



Billi Service Plans

Instant filtered drinking water systems require regular maintenance and filter replacements to ensure optimal water quality and an ongoing high level of performance.

Our Billi Customer Care team includes a UK-wide network of trained service technicians and service agents to provide technically correct, prompt and reliable service.

Billi offers 2 plans to suit customers' requirements.

For more information, please visit www.billi-uk.com/aftercare



Silver Plan

A filter replacement performed by a trained technician.



Gold Plan

Comprehensive maintenance and filter replacement plan.



Eco & Quadra - Instant boiling and chilled filtered water system

Leading the Billi range, the Eco and Quadra boiling and chilled drinking water systems are space saving, energy efficient and elegant. The functional style is designed for high use and meets green building design principles – providing you with the ultimate in environmentally sensitive appliances.

Product Code	Model	Suggested no. of people	Boiling water delivery cups per hour	Chilled water delivery cups per hour	Power supply (amps)	Height mm	Width mm	Depth mm
901000LCH	Eco	10	90	60	13	340	180	500
904010LCH	Quadra Compact	up to 20	100	150	13	340	315	365
904040LCH	Quadra 440	up to 40	150	175	13	340	315	465
904060LCH	Quadra 460	up to 60	180	175	13	340	315	465
904100LCH	Quadra 4100	up to 100	250	175	20	340	315	465

When specifying Billi Quadra air-cooled models, change the 4 in the product code to 5 and insert AC after the model eg: 905040, Quadra 440AC. For air-cooled units add 45mm to depth of above dimensions, does not apply to Eco.



Quadra Plus - Dual temp filtered water system plus mixer tap

Enjoy all the benefits of Billi's boiling and chilled system and more. Quadra Plus also features a separate sink mixer tap, complete with its own generous hot water supply allowing it to function as a hot water service for the mixer tap as well as providing boiling and chilled drinking water. Also available in gooseneck and square mixer tap options.

Product Code	Model	50° hot water capacity litres	50° hot water delivery litres per hour	Boiling water delivery cups per hour	Chilled water delivery cups per hour	Power supply (amps)	Height mm	Width mm	Depth mm
904065LPCH	Quadra Plus 9	9	60	180	175	13	340	315	465
904105LPCH	Quadra Plus 15	15	85	250	175	20	340	315	465

When specifying Billi Quadra Plus air-cooled models, change the 4 in the product code to 5 and insert AC after the model eg: 905065, Quadra Plus 9AC. For air-cooled units add 45mm to depth of above dimensions.

For all under-counter filtered water systems, consideration may be needed for usage patterns and draw-off methods. 1 cup = 170ml.



Quadra Sparkling - Professional sparkling systems

The Billi Sparkling systems are the ultimate drinking water appliances which instantly deliver boiling, chilled and professional sparkling filtered water.

Product Code	Model	Suggested no. of people	Boiling water delivery cups per hour	Chilled and sparkling cups per hour	Power supply (amps)	Height mm	Width mm	Depth mm
906060LCH	Quadra Sparkling 460	60	180	200	2 x 13	C&S Boiling 420 340	180 180	460 460



Quadra Sparkling Plus - Professional sparkling system plus mixer tap

The Quadra Sparkling Plus system is a filtered boiling, chilled and sparkling water system. The Plus range includes a separate mixer tap that dispenses hot and cold filtered water. Also available in gooseneck and square mixer tap options.

Product Code	Model	50° hot water capacity litres	50° hot water delivery litres per hour	Boiling water delivery cups per hour	Chilled & sparkling cups per hour	Power supply (amps)	Height mm	Width mm	Depth mm
906065LPCH	Quadra Sparkling Plus 9	9	60	180	200	2 x 13	C&S Boiling 420 340	180 180	460 460



XL levered dispenser in matte black with matching paddle mixer tap

Save cupboard space with the smallest under-counter unit footprint



Billi Eco under-counter unit



Sahara - Instant boiling and still filtered water systems

As an alternative to boiling and chilled, the Sahara system dispenses boiling and an unlimited source of still filtered water.

Product Code	Model	Suggested no. of people	Boiling water delivery cups per hour	Still water delivery cups per hour	Power supply (amps)	Height mm	Width mm	Depth mm
943020LCH	Sahara 320	20	100	unlimited	13	340	180	460
943060LCH	Sahara 360	60	180	unlimited	13	340	180	460



Alpine - Chilled and ambient still filtered water systems

Never run out of chilled filtered water with the Billi Alpine system. Providing a constant stream of fresh filtered chilled water the Billi Alpine offers premium filtration, easy installation, lower power consumption all with a choice of dispenser. The Alpine 125 system offers the convenience of both chilled and still filtered water from a single dual temperature dispenser.

Product Code	Model	Dispenser type	Suggested no. of people	delivery cups per hour	Power supply (amps)	Height mm	Width mm	Depth mm
932120RCH	Alpine 120	Round Slimline*	20	120	13	340	180	460
932125LCH	Alpine 125	Dual Temperature	20	120	13	340	180	460

*Also available in square slimline tap.



Alpine Sparkling - Chilled and professional sparkling system

The Alpine Sparkling system is a filtered chilled and sparkling water system which instantly provides chilled and sparkling water.

Product Code	Model	Suggested no. of people	Delivery cups per hour	Power supply (amps)	Height mm	Width mm	Depth mm
933200DCH	Alpine Sparkling 200	40	200	13	420	180	460



Spring Bottling System - Bar-style chilled & sparkling filtered water

Practical, reliable and visually striking, these innovative water systems bring a high capacity refreshment solution to any commercial space.



Product Code	Model	Suggested no. of people	Chilled and sparkling litres per hour	Power supply (amps)	Height mm	Width mm	Depth mm
829000UK	Spring 350 Bottling System	350	60	1 x 13	550	245	320
829100UK	Spring 500+ Bottling System	500+	80	1 x 13	600	455	360



Filter Tap - Instant still filtered water system

Install a sink mounted Billi filter tap for great tasting water at a fraction of the cost of bottled water. Using almost no space under the sink, the Filter Tap removes undesirable taste, odours and sediments leaving you with clean filtered water.

Product Code	Model	Dispenser type	Still water cups per hour	Height mm	Width mm	Depth mm
932210RCH	Filter Tap	Round Slimline*	unlimited	320	130	130

*Also available in square slimline tap



Style versus function. With Billi, you can have both at your fingertips.

XL levered dispenser in matte black with matching 70mm riser and font

X SERIES DISPENSER OPTIONS



XL LEVERED DISPENSER

The levered dispenser is streamlined and elegant. It is simply operated with position-sensitive levers. It is also DDA Compliant

Dispenser Code: **L**

* Pantone colours, special finishes & two tone finishes are available for XL only (special orders only).

FINISH OPTIONS

CH	BR	MB
Chrome	Brushed	Matte Black

MW	RG
Matte White	Rose Gold

SPECIAL FINISHES

Gloss Black	Platinum	Florentine Bronze
Brushed Rose Gold	Urban Brass	Gun Metal Grey



XT TOUCH DISPENSER

The touch dispenser is an innovative, contemporary tap, which has a top operating panel offering a sophisticated and clean style.

Dispenser Code: **T**

FINISH OPTIONS

CH	BR	MB
Chrome	Brushed	Matte Black

MW	RG
Matte White	Rose Gold



XR REMOTE DISPENSER

The remote dispenser is another version of the lever free tap; however the operation panel is located away from the tap. This can be installed in your desired position to meet design requirements.

Dispenser Code: **R**

FINISH OPTIONS

CH
Chrome

OPTIONAL DUAL TEMP DISPENSERS



SAFETY DISPENSER

The safety dispenser is specifically designed for correctional centres and mental health facilities

Dispenser Code: **V**

FINISH OPTIONS

CH
Chrome



COLOURED XL LEVERED DISPENSER

Non-standard coloured levers provide full vision safety where LED indicators cannot be seen.

FINISH OPTIONS

RB
Chrome with Red & Blue Levers

BRILLE PADS

Optional braille pads can be supplied with the coloured XL levered dispenser to provide further safety for vision impaired users.



* Product LEDs are for image purposes only. Fully functional product operates in accordance to specification.

TWO TONE FINISH OPTIONS

MB	CH	MB	BR	MB	RG
Matte Black with Chrome Levers		Matte Black with Brushed Levers		Matte Black with Rose Gold Levers	

MW	CH	MW	BR	MW	RG
Matte White with Chrome Levers		Matte White with Brushed Levers		Matte White with Rose Gold Levers	



XT dispenser in matte black with matching 70mm riser and font



XT dispenser in matte black with matching 70mm riser and font



XT dispenser in chrome with matching 70mm riser and font



We can match any Pantone® colour on our XL levered dispenser range*.
*Special orders only.

SLIMLINE DISPENSER OPTIONS



ROUND SLIMLINE DISPENSER

Round in design with single pin lever option.
Suitable for ambient or chilled water.

Dispenser Code: **R**

FINISH OPTIONS

CH	BR	MB
Chrome	Brushed	Matte Black

MW	RG
Matte White	Rose Gold

Special Finishes are available (special order only)



SQUARE SLIMLINE DISPENSER

Square in design with single paddle lever option.
Suitable for ambient or chilled water.

Extended Spout model available in Chrome and Matte Black.

Dispenser Code: **S**

FINISH OPTIONS

CH	BR	MB
Chrome	Brushed	Matte Black

MW	RG
Matte White	Rose Gold

Special Finishes are available (special order only)



DUAL LEVERED SLIMLINE DISPENSER

Round in design with dual levers.
Suitable for chilled and sparkling units.

Dispenser Code: **D**

FINISH OPTIONS

CH	MB
Chrome	Matte Black

MIXER TAP OPTIONS



PADDLE LEVER MIXER TAP

Suitable for plus units and offers hot and cold water in addition to boiling and chilled X Series dispenser range.

Dispenser Code: **P**

FINISH OPTIONS

CH	BR	MB
Chrome	Brushed	Matte Black

MW	RG
Matte White	Rose Gold

Special Finishes are available (special order only)



GOOSENECK MIXER TAP

Round gooseneck design suitable for plus units and offers hot and cold water in addition to boiling and chilled X Series dispenser range.

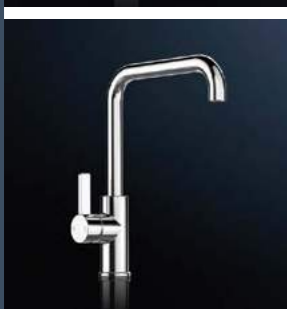
Dispenser Code: **G**

FINISH OPTIONS

CH	BR	MB
Chrome	Brushed	Matte Black

MW	RG
Matte White	Rose Gold

Special Finishes are available (special order only)



SQUARE MIXER TAP

Square gooseneck design suitable for plus units and offers hot and cold water in addition to boiling and chilled X Series dispenser range.

Dispenser Code: **S**

FINISH OPTIONS

CH	BR	MB
Chrome	Brushed	Matte Black

MW	RG
Matte White	Rose Gold

Special Finishes are available (special order only)

LEGEND (TAP TYPES) **R** Remote **R** Round **S** Square Gooseneck **S** Square Slimline

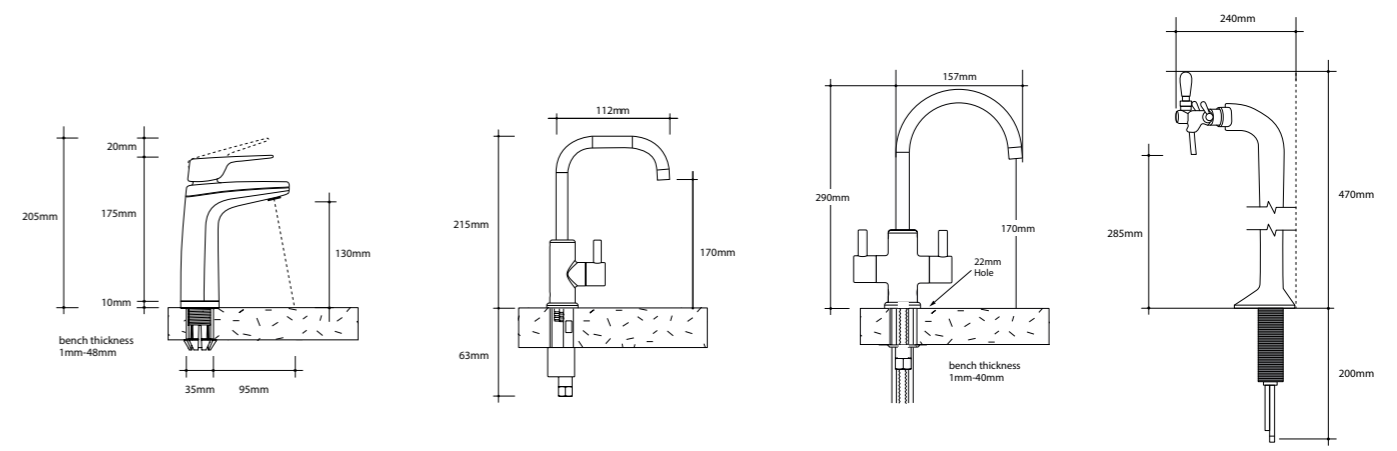


Slimline round dispenser in chrome with slimline font



Slimline square dispenser in chrome with slimline font

DISPENSER DIMENSIONS



XL Levered Dispenser

Slimline Dispenser - Round or Square

Dual Levered Slimline Dispenser

Spring Bottling System



FONT with 120mm RISER

Product Code: 992803

SUITABLE FOR DISPENSER TYPES:

- L
- T
- R
- LP
- LG
- LS
- TP
- TG
- TS
- RP
- RS
- RG

FINISH OPTIONS

- CH
Chrome
- BR
Brushed
- MB
Matte Black

- MW
Matte White
- RG
Rose Gold

Special Finishes are available (special order only)
*Fonts with 70mm riser are also available.



SLIMLINE FONT

Product Code: 992810

SUITABLE FOR DISPENSER TYPES:

- R
- S
- D

FINISH OPTIONS

- CH
Chrome
- BR
Brushed
- MB
Matte Black

- MW
Matte White
- RG
Rose Gold

Special Finishes are available (special order only)



120mm RISER

Product Code: 992830

SUITABLE FOR DISPENSER TYPES:

- L
- T
- R
- LP
- LG
- LS
- TP
- TG
- TS
- RP
- RS
- RG

FINISH OPTIONS

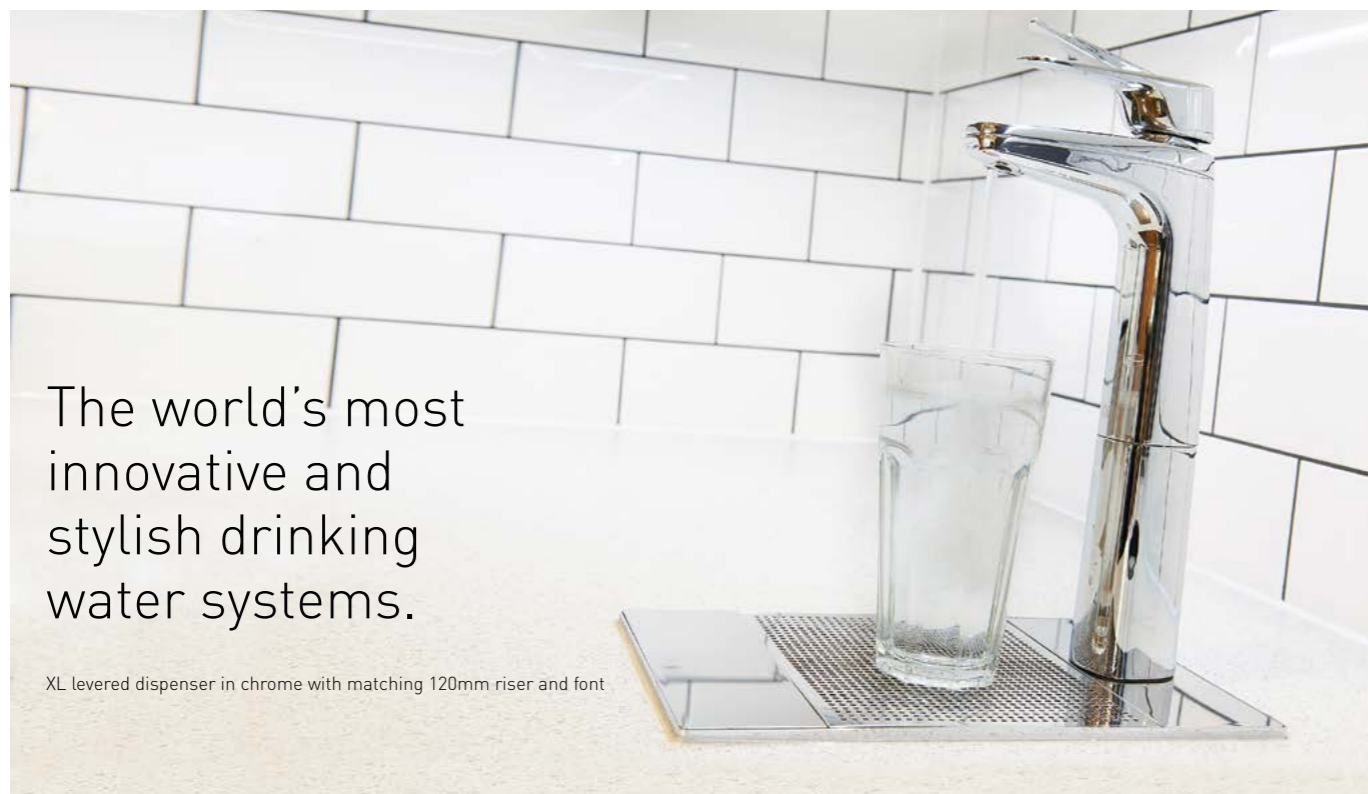
- CH
Chrome
- BR
Brushed
- MB
Matte Black

- MW
Matte White
- RG
Rose Gold

Special Finishes are available (special order only)
*70mm risers are also available.

LEGEND (TAP TYPES)

- R Remote
- R Round
- S Square Gooseneck
- S Square Slimline



The world's most innovative and stylish drinking water systems.

XL levered dispenser in chrome with matching 120mm riser and font

BEFORE THE INSTALLATION



BILLI ECO, ALPINE & SAHARA

UNIT DIMENSIONS

Width: 180mm
Height: 340mm
Depth: 460mm
(Eco: 500mm)

CABINET SPACE

Width: 500mm (minimum)
Height: 500mm (minimum)
POWER: 1 x 13amp socket
Units supplied with 0.9 metre flex cord and plug.
WATER: A single 15mm (1/2") stop-tap with a male thread should be installed in an easily accessible position.
Minimum dynamic water pressure of 2.5 bar.
WASTE: 1 1/2" upstand or an appliance spigot on sinkwaste.

INSTALLATION COMPLETE



BEFORE THE INSTALLATION



BILLI QUADRA (COMPACT, 440, 460, 4100)

UNIT DIMENSIONS

Width: 315mm
Height: 340mm
Depth: 465mm
(Quadra Compact: 365mm)

CABINET SPACE

Width: 500mm (minimum)
Height: 500mm (minimum)
POWER: Compact, 440, 460: 1 x 13amp socket
Units supplied with 0.9 metre flex cord and plug.
4100: 1 x 20amp double pole outlet.
Units supplied with 0.9 metre flex cord.
WATER: A single 15mm (1/2") stop-tap with a male thread should be installed in an easily accessible position.
Minimum dynamic water pressure of 2.5 bar.
WASTE: 1 1/2" upstand or an appliance spigot on sink waste.

INSTALLATION COMPLETE



BEFORE THE INSTALLATION



BILLI QUADRA PLUS 9 & 15

UNIT DIMENSIONS

Width: 315mm
Height: 340mm
Depth: 465mm

CABINET SPACE

Width: 500mm (minimum)
Height: 500mm (minimum)
POWER: Plus 9: 1 x 13amp socket
Units supplied with 0.9 metre flex cord and plug.
Plus 15: 1 x 20amp double pole outlet.
Units supplied with 0.9 metre flex cord.
WATER: 2 x 15mm (1/2") stop-tap with a male thread should be installed in an easily accessible position.
Minimum dynamic water pressure of 2.5 bar.
WASTE: 1 1/2" upstand or an appliance spigot on sink waste.

INSTALLATION COMPLETE



BEFORE THE INSTALLATION



BILLI QUADRA SPARKLING

UNIT DIMENSIONS

Chilled & Sparkling
Width: 180mm
Height: 420mm
Depth: 460mm

Boiling

Width: 180mm
Height: 340mm
Depth: 460mm

CABINET SPACE

Width: 600mm (minimum)
Height: 500mm (minimum)
POWER: 2 x 13amp sockets
Unit supplied with 1.5 metre flex cord and plug.
WATER: 1 x 15mm (1/2") stop-tap with a male thread should be installed in an easily accessible position. Minimum dynamic water pressure of 2.5 bar.
WASTE: 1 1/2" upstand or an appliance spigot on sink waste.
(only applicable if drainage font is to be installed)
VENTILATION: Unit requires ventilation.
For more information please download our Ventilation Guidance.

INSTALLATION COMPLETE



BEFORE THE INSTALLATION



BILLI QUADRA PLUS SPARKLING

UNIT DIMENSIONS

Chilled & Sparkling
Width: 180mm
Height: 420mm
Depth: 460mm

Boiling

Width: 180mm
Height: 340mm
Depth: 460mm

CABINET SPACE

Width: 600mm (minimum)
Height: 500mm (minimum)
POWER: 2 x 13amp socket
Units supplied with 1.5 metre flex cord and plug.
WATER: 2 x 15mm (1/2") stop-tap with a male thread should be installed in an easily accessible position.
Minimum dynamic water pressure of 2.5 bar.
WASTE: 1 1/2" upstand or an appliance spigot on sink waste.
(only applicable if drainage font is to be installed)
VENTILATION: Unit requires ventilation.
For more information please download our Ventilation Guidance.

INSTALLATION COMPLETE



1 CHOOSE YOUR UNDER-COUNTER UNIT

Combination	Suggested No. of People	Product Description	Code
	Up to 10	Billi Eco	901000
	Up to 20	Billi Quadra Compact	904010
	Up to 40	Billi Quadra 440	904040
	Up to 60	Billi Quadra 460	904060
	Up to 100	Billi Quadra 4100	904100
	Up to 20	Billi Sahara 320	943020
	Up to 60	Billi Sahara 360	943060
	Up to 20	Billi Alpine 125	932125
	Up to 60	Billi Quadra Sparkling 460	906060
	Up to 60	Billi Quadra Sparkling Plus 9	906065
	Up to 60	Billi Quadra Plus 9	904065
	Up to 100	Billi Quadra Plus 15	904105
	Up to 40	Billi Alpine Sparkling 200	933200
	Up to 350	Billi 350 Spring Bottling System	829000UK
	Up to 500+	Billi 500 Spring Bottling System	829100UK
	Up to 20	Billi Alpine 120	932120
	Unlimited	Billi Filter Tap	932210

2 CHOOSE YOUR DISPENSER DESIGN



XL Levered Dispenser Code: **L**

XT Touch Dispenser Code: **T**

XR Remote Dispenser Code: **R**

Vandal Proof Dispenser Code: **V**

Dispenser Code: **L**

Dispenser Code: **LP** Dispenser Code: **LG** Dispenser Code: **LS**

Dispenser Code: **LP** Dispenser Code: **LG** Dispenser Code: **LS**

Dispenser Code: **TP** Dispenser Code: **TG** Dispenser Code: **TS**

Dispenser Code: **RP** Dispenser Code: **RG** Dispenser Code: **RS**

Dual Levered Slimline* Dispenser Code: **D**

Spring Bottling System Dispenser Code: **BS**

Square Slimline Dispenser Code: **S**

Round Slimline Dispenser Code: **R**

* For Alpine Sparkling units only.

3 CHOOSE YOUR DISPENSER FINISH

XL Levered, XT Touch, Round Slimline & Square Slimline Dispensers and Mixer Tap

CH
Chrome

BR
Brushed

MB
Matte Black

MW
Matte White

RG
Rose Gold

* Pantone colours and special finishes are available for XL only (special orders only).

XR Remote, Vandal Proof & Dual Levered Slimline Dispensers

CH
Chrome

Let us help you with your specification.
Contact our specification team on: **020 7456 6789**.

4 CHOOSE YOUR OPTIONAL ACCESSORIES

Type	Suits dispenser types	Code	Finishes
Font with 70mm Riser	L T R LP LG LS TP TG TS RP RG RS	992800	CH BR MB Chrome Brushed Matte Black MW RG Matte White Rose Gold
Font with 120mm Riser	L T R LP LG LS TP TG TS RP RG RS	992803	CH BR MB Chrome Brushed Matte Black MW RG Matte White Rose Gold
70mm Riser	L T R LP LG LS TP TG TS RP RG RS	992820	CH BR MB Chrome Brushed Matte Black MW RG Matte White Rose Gold
120mm Riser	L T R LP LG LS TP TG TS RP RG RS	992830	CH BR MB Chrome Brushed Matte Black MW RG Matte White Rose Gold
Tubing Extension Kit	L T R	990720	N/A
Tubing Extension Kit	LP LG LS TP TG TS RP RG RS	990714	N/A
Slimline Font	R S D	992810	CH BR MB Chrome Brushed Matte Black MW RG Matte White Rose Gold
Tubing Extension Kit	R S	990724	N/A

LEGEND (TAP TYPES) **R** Remote **R** Round **S** Square Gooseneck **S** Square Slimline



The Costa Roastery, Basildon

Costa

Costa Coffee was founded in London in 1971 by the Costa family as a wholesale operation supplying roasted coffee to caterers and specialist Italian coffee shops.

Their brand new coffee roastery in Basildon officially opened in March 2017 enabling them to produce more than 2 billion cups of the hot drinks a year. Europe's biggest coffee roastery also includes a new coffee academy, to train 3,000 baristas per year.

Marc Congdon, the Engineering Manager at Costa, was tasked with choosing a very efficient under-counter system to dispense boiling and chilled water that would not take up too much space.

Across three floors, including their new product development labs and the new academy space, they chose Quadra 440 with XL dispenser in chrome with matching drainage font. This system dispenses an immediate draw off capacity of 40 cups; 150 cups of boiling and 175 cups of chilled filtered water every hour. The Billi under-counter systems are a great addition to their office space, giving their staff an opportunity to enjoy coffee alternatives.

"We were really pleased with the overall Billi experience, the Billi Team were very helpful and we felt supported all the way. We have had previous experience with under-counter water systems so we were looking for a stylish tap to go with our modern design as well as a reliable customer service. So we chose Billi!"
Marc Congdon, the Engineering Manager, Costa.



The Department Store, Brixton

Squire & Partners

Squire and Partners is an award-winning architecture practice which has been designing and executing buildings on key sites in London and internationally for over 35 years.

After 16 years in King's Cross, Squire and Partners moved their 220 staff to a new home in Brixton in summer 2017. Having purchased a dilapidated Edwardian department store two years previously, the practice entirely reimagined the space allowing the existing fabric and layers of history to inform the new design. They were looking for instant boiling and chilled filtered water system in matte black with a matching mixer tap to dispense hot and cold water to complement their copper-finish kitchen worktops and black cupboards.

Across all floors, Squire and Partners have selected our popular plus systems, combining boiling and chilled filtered water through the XL lever dispenser in Matte Black and hot and cold water from a Gooseneck Sink Mixer Tap in matching finish.

The project was led internally by architects and designers and co-ordinated with Stoneforce, Colliers and DSA Engineering.

Booking.com

Booking.com is an online accommodation booking website which has been operating for over 10 years. Established in Amsterdam, the company guarantees the best prices for every type of property, from small family run bed and breakfasts, to executive apartments and five-star luxury suites.

When they decided to move their offices to a prime location in Central London, they required a full fit-out. For this project, they appointed HLW International, a global architecture, interiors, strategy, planning and engineering firm, who specified Billi Dispensers for their main kitchen area, and another tea-point within the office space. After the recommendations from HLW, the fit-out company, OD Projects contacted Billi to request involvement on the project.

Booking.com opted for Billi Quadra Plus 15, which provides a perfect mix of functional and aesthetical benefits. With a drainage font in chrome and a gloss finish, the dispenser delivers instant boiling and chilled water from an XL lever dispenser at just a touch of a finger, and hot and ambient from a second sink mixer tap – all this from a single under counter boiler unit.



The Monument Building, London

Gymshark

Gymshark is an online fitness clothing and accessory manufacturer. Created by a young group of entrepreneurs in Birmingham in 2012, Gymshark has grown into one of the most recognisable and influential brands within the fitness industry, with over 7 million active online supporters.

When deciding on the details for their contemporary new HQ, Katie Watkinson and her team was looking to provide an energy-efficient and sustainable hydration solution for the Gymshark staff that fit with the company's values of excellence and innovation. The office had decided against the use of glasses and mugs in favour of individual and re-usable travel mugs for each member of staff. They wanted a tea point that reflected this dedication to sustainability. With over 200 members of staff and a modern monochrome aesthetic throughout the office, Gymshark decided a Matte Black Billi was the right fit.

"Our experience with the Billi system has been seamless. Whilst researching a water system suitable for our new head office it became apparent to me that the Billi system in the matt black finish was most suited to our new working environment. The sales team were very helpful assisting us with the systems available that met the needs of our rapidly growing family. Since moving into the office in April, the Billi tap systems have proved a huge success with the gymshark team. It was really important that we implemented a system that made it easy for people to utilise their reusable water bottles and mugs, while also providing the additional benefit of a great social area in the office for interaction and cross team communications."
Katie Watkinson, Special Projects Manager, Gymshark.



GSHQ, Solihull



*On Eco, Quadra and Quadra Plus models only.



*Filters only.



Standard Warranty

All components of the drinking water systems are covered by a 24-month warranty.

Commitment to Quality

A strong commitment to quality is as important to Billi as style, function and innovation. Recognising the importance of reliability to customers, all Billi water systems are manufactured to strict quality standards.

Every system is designed to provide the highest possible standards of efficiency and energy savings.

Certifications

Every Billi drinking water appliance is manufactured under a certified quality control system. They have been tested and comply with all relevant standards. Billi Eco, Quadra, Quadra Plus, Sahara and Sahara Plus systems are tested to and comply with; Watermark licence Number 21525; AS3498.

Billi Alpine and Filter Tap systems are tested to and comply with; Watermark Licence Number 21882; ATS 5200:105.

All Billi systems are also tested to: AS/NZS 4020; AS1428 Accessibility Design Requirements; Billi is also ISO 9001 Certified Certificate Number QEC11627.

Billi Eco, Quadra and Quadra Plus products are certified Gold Level under Global GreenTag standards.

Billi water and air-cooled under-counter systems (Eco, Quadra & Quadra Plus, Sahara, Alpine models) with XL, XT and XR dispensers are WRAS approved. WRAS Approval Number: 1806056. Further information, please visit: www.wras.co.uk/search/products/billi



XL levered dispenser in matte black with matching 120mm riser and font



Head Office
6B Central Avenue
St. Andrews Business Park
Norwich
NR7 0HR

London Showroom
15 Dufferin Street
London
EC1Y 8PD

T 020 7456 6789
E sales@billi-uk.com
W www.billi-uk.com

visit us at



As Billi (UK) LLP has a policy of continual improvement, all details are subject to change without notice. All goods are sold subject to our published terms and conditions. Billi is a registered trademark.